



Fitting Instructions and Parts List

**Part No.
RTC 829**

**Issue 2
November 1978**

BL Components Ltd.

Unipart House
Cowley, Oxford OX4 2PG
Telephone: Oxford (0865) 778966
Telex: 83331
Cables: UNIPART Oxford

REAR MUD FLAPS
Kit Part No. RTC 706
for the
LAND-ROVER
SERIES III 109"

REAR MUDDLAP KIT, PART No. RTC 0706

The rear mudflaps are carried on steel mounting brackets located between the chassis and the body side, behind the rear wheels.

comprising :

Description	Qty.	Part No.
Rear mud flap LH	1	MRC 2125
Mounting bracket LH	1	MRC 2124
Rear mud flap RH	1	348083
Mounting bracket RH	1	MRC 2123
Bolt	2	255206
S/Washer	2	3074
Plain washer	2	RTC 0609
Nut	2	254810
Bolt	2	255206
Nutsert	2	79240
S/Washer	2	3074
Plain washer	2	RTC 0609
Plain washer	8	3852
Screw	8	78291
S/Washer	8	3073
Nut	8	257023

NOTE: The Manufacturers reserve the right to vary their specifications with or without notice, and at such times and in such manner as they think fit. Major as well as minor changes may be involved in accordance with the Manufacturer's policy of constant product improvement.

Whilst every effort is made to ensure the accuracy of the particulars contained in this Fitting Instruction, neither the Manufacturer nor the Distributor or Dealer by whom this Fitting Instruction is supplied, shall in any circumstances be held liable for any inaccuracy or the consequences thereof.

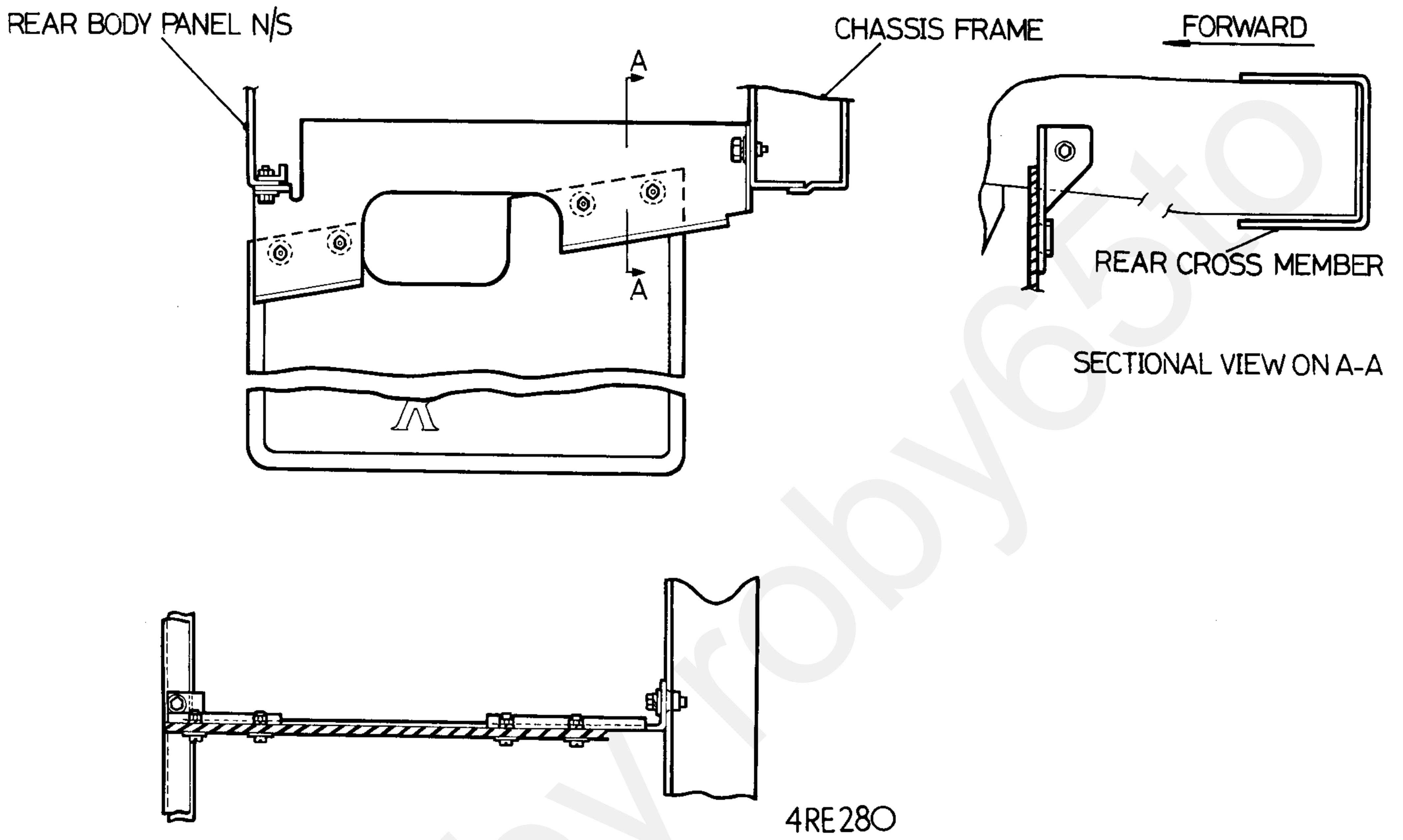
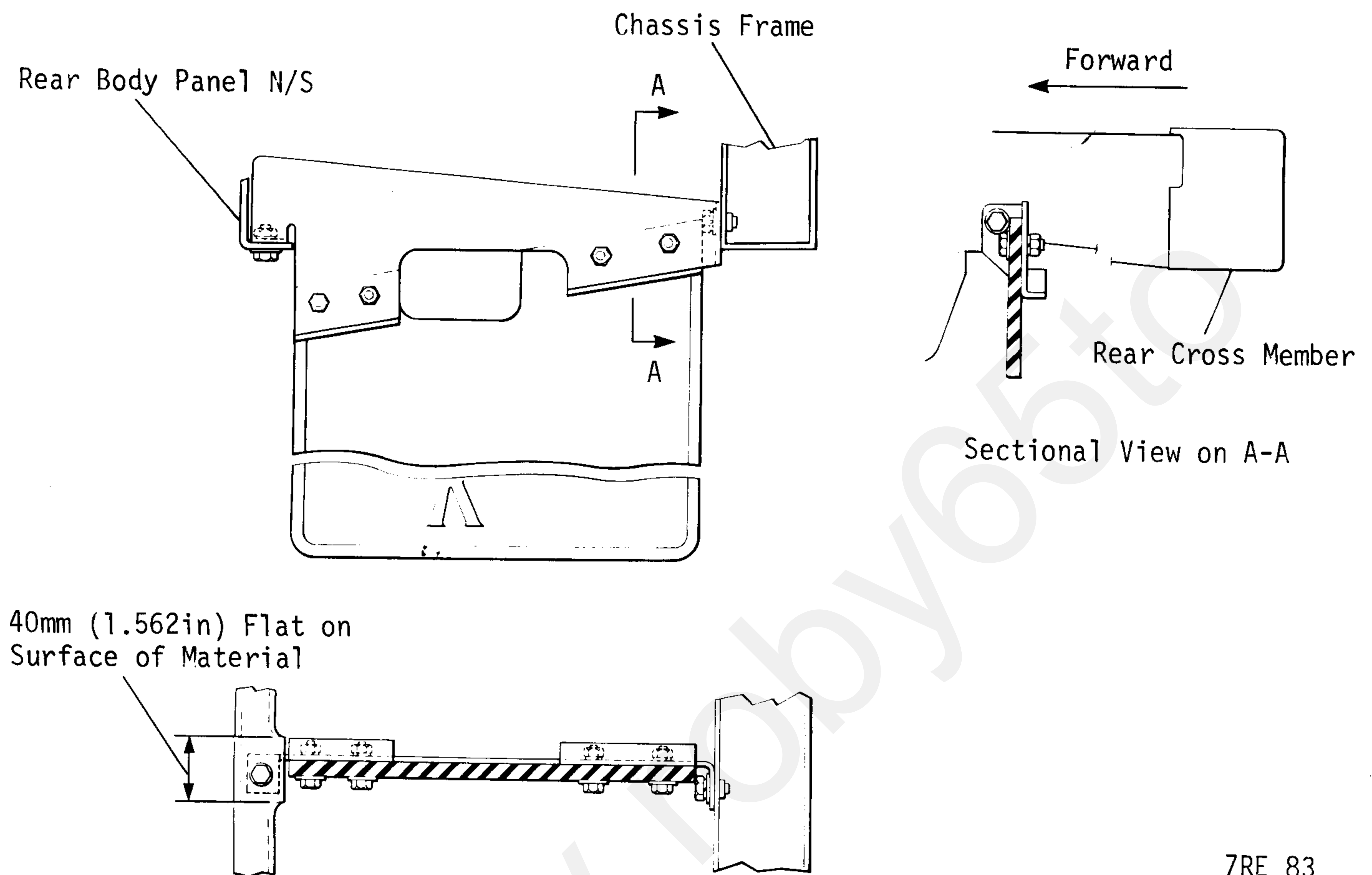


Fig. 1. Installation of rear mudflaps

Procedure:

1. Drill out existing hole in chassis (located approximately 50·8 mm from the rear of the rear spring mounting point) to 9·5 mm and fit nutsert 79240.
2. Assemble LH mudflap MRC 2125 to LH bracket MRC 2124, and RH mudflap 348083 to RH bracket MRC 2123 using screws 78291 (8) and plain washer 3852 (8) against the mud flap, which should be fitted on the front side of the bracket, and spring washer 3073 (8) and nut 257023 (8) against the bracket.
3. Secure the mudflap brackets to the fitted nutserts in the chassis using bolt 255206 (2) spring washer 3074 (2) and plain washer RTC 0609.
4. Using the mudflap bracket as a template and lining the bracket square with the inner fixing, drill a hole in the flange of the rear bodyside panel 6·7 mm and secure using bolt 255206 (2) plain washer RTC 0609 (2) against the bracket and spring washer 3074 and nut 254810 (2) against the inside of the body flange.

**SUPPLEMENTARY SHEET TO COVER ALTERNATIVE BRACKETS
(CHECK BEFORE FITTING)**



7RE 83

Fig. 2. Installation of rear mudflaps using alternative brackets

Procedure:

1. Drill out existing hole in chassis (located approximately 50.8 mm from the rear of the rear spring mounting point) to 9.5 mm and fit nutsert 79240.
2. Assemble LH mudflap to LH bracket and RH mudflap to RH bracket using screws 78291 (8), plain washer 3852 (8), spring washer 3073 (8) and nut 257023 (8).
3. Flatten the internal channel at the bottom edge of the rear body side panel, each side of the vehicle for approximately 40 mm and in line with the inner mounting point.
4. Drill a 6.75 mm diameter hole in the inner face of each bracket. Locate the assemblies in position on the flattened area of the body side panel and secure the inner ends of the brackets to the nutserts in the chassis.
5. Using the mounting brackets as templates, position the fixing hole at the outer end centrally on the flattened area of the body side panel and drill a 6.75 mm diameter hole through the bottom edge of the body side panels.
6. Secure the mudflap assemblies to the body side panels.

PDF by robby6510