

# Fitting Instructions



**SUBJECT** FITTING REAR FOLDING STEP

**DATE** JUNE 1987

**MODEL** LAND-ROVER SERIES IIA and III with HARDTOP and REAR DOOR

## PART NOS.

### REAR FOLDING STEP KIT

1 605934

comprises:-

Step .....	1	NRC2341
Mat .....	1	517977
Rivet .....	8	307840
Screw .....	4	77869
Washer .....	4	WM702001L
Nut .....	4	RTC608
Support bracket for rear step .....	1	NRC2342
Anchor bracket for spring .....	1	552133
Bolt (5/16" UNF x 1 1/8")	}	Fixing support brkt and anchor brkt to
Plain washer		
Self-locking nut (5/16" UNF)	}	rear crossmember
Set bolt (3/8" UNF x 1")		
Spring washer	}	Fixing bracket and hinge centre
Bolt (3/8" UNF x 1 1/4")		
Distance piece	}	to rear crossmember
Self-locking nut (3/8" UNF)		
Spring for rear step .....	1	WM600061L
Buffer for rear step .....	1	255249
Drive screw	}	Fixing buffer to rear crossmember
Plain washer		
Hinge pin for rear step .....	1	NV606041L
Spring washer	}	Fixing hinge pin
Plain washer		
Split pin	}	
		AB608061L
		4030L
		509120
		WS600061L
		WB110061L
		RTC600

### NOTE:

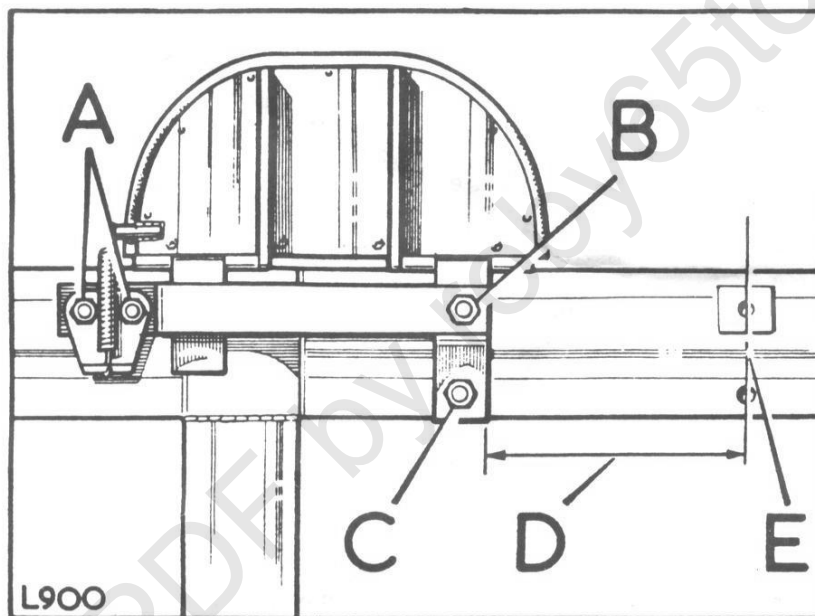
The Manufacturers reserve the right to vary their specifications with or without notice, and at such times and in such manner as they think fit. Major as well as minor changes may be involved in accordance with the Manufacturer's policy of constant product improvement.

Whilst every effort is made to ensure the accuracy of the particulars contained in this Fitting Instruction, neither the Manufacturer nor the Distributor or Dealer by whom this Fitting Instruction is supplied, shall in any circumstances be held liable for any inaccuracy or the consequences thereof.

### PROCEDURE:

1. Offer up support bracket 552132 to rear crossmember with the edge approximately 7" from the centre, shown in illustration as 'D'.
2. The four holes in the chassis should be pre-drilled. If it is found that the holes do not exist then use the bracket as a template to drill the holes using suitable drills.
3. Clean out hole 'B' with a suitable tap to remove traces of paint. Screw set bolt SH606081L (3/8" UNF x 1") with spring washer WM600061L into the hole. It will be seen that the other three bolt holes line up.
4. Fit bolt 255249 (3/8" UNF x 1 1/4") with distance piece 501070 through hole 'C', passing the bolt and distance piece through the top of the chassis crossmember flange. Secure with self-locking nut NV605041L (3/8" UNF).

5. Fit bolts (2) SH605101L (5/16" UNF x 1 1/8") and plain washers RTC610 through holes 'A'. Fit anchor bracket for spring 552133 over bolts and then screw on self-locking nuts (2) WF605041L (5/16" UNF). (NV605041L) Centralise bracket and tighten all nuts.
6. Assemble hinge pin 509120, with a split pin RTC600, and plain washer WB110061L on one end.
7. Offer up step NRC2341 to rear bracket and pass the hinge pin through the hinges from right to left. Finish with spring washer WS600081L and remaining plain (WS600061L) washer and split pin.
8. Fit spring 264362 from anchor bracket to lug on side of step.
9. Drill a hole, using a 1/8" (3.175 mm) drill, 11.375" (288.9 mm) from the chassis centre line and 2.75" (69.85 mm) from the top of the rear chassis member to enable the rubber buffer to be fitted.
10. Assemble drive screw AB608061L with plain washer 4030 and pass through rubber buffer 304125. Screw assembled drive screw, washer and rubber buffer into the hole drilled in operation 9.
11. Check that the operation of the step is correct.



Folding step in position, viewed from underneath.

- |   |   |
|---|---|
| <ul style="list-style-type: none"> <li>A - Two holes for support bracket and anchor bracket.</li> <li>B - Tapped hole for set bolt.</li> <li>C - Plain hole for bolt and distance piece.</li> </ul> | <ul style="list-style-type: none"> <li>D - Dimension from centre of rear chassis member to edge of bracket which is 7".</li> <li>E - Rear crossmember centre line.</li> </ul> |
|---|---|