



Fitting Instructions and Parts List

**Part No.
607684**

**Issue 1
February 1972**

Leyland Cars
Service and Parts Division

British Leyland UK Limited
Jaguar & Rover Triumph, Parts & Accessories
P.O. Box 150, Fletchamstead Highway
Coventry CV4 9DB

NOTE

The Manufacturers reserve the right to vary their specifications with or without notice, and at such times and in such manner as they think fit. Major as well as minor changes may be involved in accordance with the Manufacturer's policy of constant product improvement.

Whilst every effort is made to ensure the accuracy of the particulars contained in this Fitting Instruction, neither the Manufacturer nor the Distributor or Dealer by whom this Fitting Instruction is supplied, shall in any circumstances be held liable for any inaccuracy or the consequences thereof.

SUBJECT: FITTING HAND THROTTLE KIT

MODELS: Land-Rover Series III 2½ litre Petrol models.

BRIEF DESCRIPTION: The dash-mounted hand throttle control enables the engine to be run at a selected set speed for driving auxiliary equipment.

PARTS REQUIRED:	HAND THROTTLE COMPLETE ASSEMBLY, RH Stg	1	607682
	HAND THROTTLE COMPLETE ASSEMBLY, LH Stg	1	607683
	Comprises:		
	Description	Qty.	Part No.
	Base plate complete	1	577098
	Shaft and lever assembly	1	577119
	Control lever for hand throttle	1	577095
	Knob for control lever	1	577111
	Bolt (10 UNF x ¾" long)	1	78384
	Nut (10 UNF)	1	257023
	Bolt (¼" UNF x 1½" long)	1	256001
	Plain washer	2	3911
	Nut (¼" UNF)	1	254810
	Sealing pad, base plate to dash	A/R	577338
	Cover for hand, throttle control	1	346857
	Drive screw	3	77704
	Lokut nut	2	79013
	Bolt (10 UNF x ⅝" long)	3	257019
	Spring washer	3	3073
	Nutcert (10 UNF)	3	78989
	Cross shaft lever, long	1	577128
	Cross shaft lever, short	1	577127
	Bolt (¼" UNF x 1½" long)	1	256001
	Plain washer	2	3911
	Nut (¼" UNF)	1	254810

continued

Description	Qty.	Part No.	
Control rod	1	577126	
Clip, control rod to levers	2	531394	
Stop clip	1	269132	} RH Stg
	2		
Spacing washer	2	3680	
Bolt (1/4" UNF x 1 1/4" long)	1	256001	} RH Stg
	2		
Plain washer	2	3911	} RH Stg
	4		
Nut (1/4" UNF)	1	254810	} RH Stg
	2		
Distance piece	1	592306	LH Stg
Bracket for accelerator relay shaft	2	236998	LH Stg
Bolt (1/4" UNF x 3/8" long)	4	255206	LH Stg
Spring washer	4	3074	LH Stg
Nut (1/4" UNF)	4	254810	LH Stg
Accelerator relay shaft	1	577304	LH Stg

} Fixing stop clips to cross shaft

} Fixing bracket to dash

PROCEDURE:

1. Locate shaft and lever assembly 577119, through the back of base plate 577098.
2. Fit control lever 577095 to the small diameter of the shaft protruding through the base plate.
3. Align the shaft and control levers as illustrated and secure with bolt 256001, plain washer 3911 (2) and nut 254810.
4. Fit knob 577111, to the control lever using bolt 78284 and nut 257023.

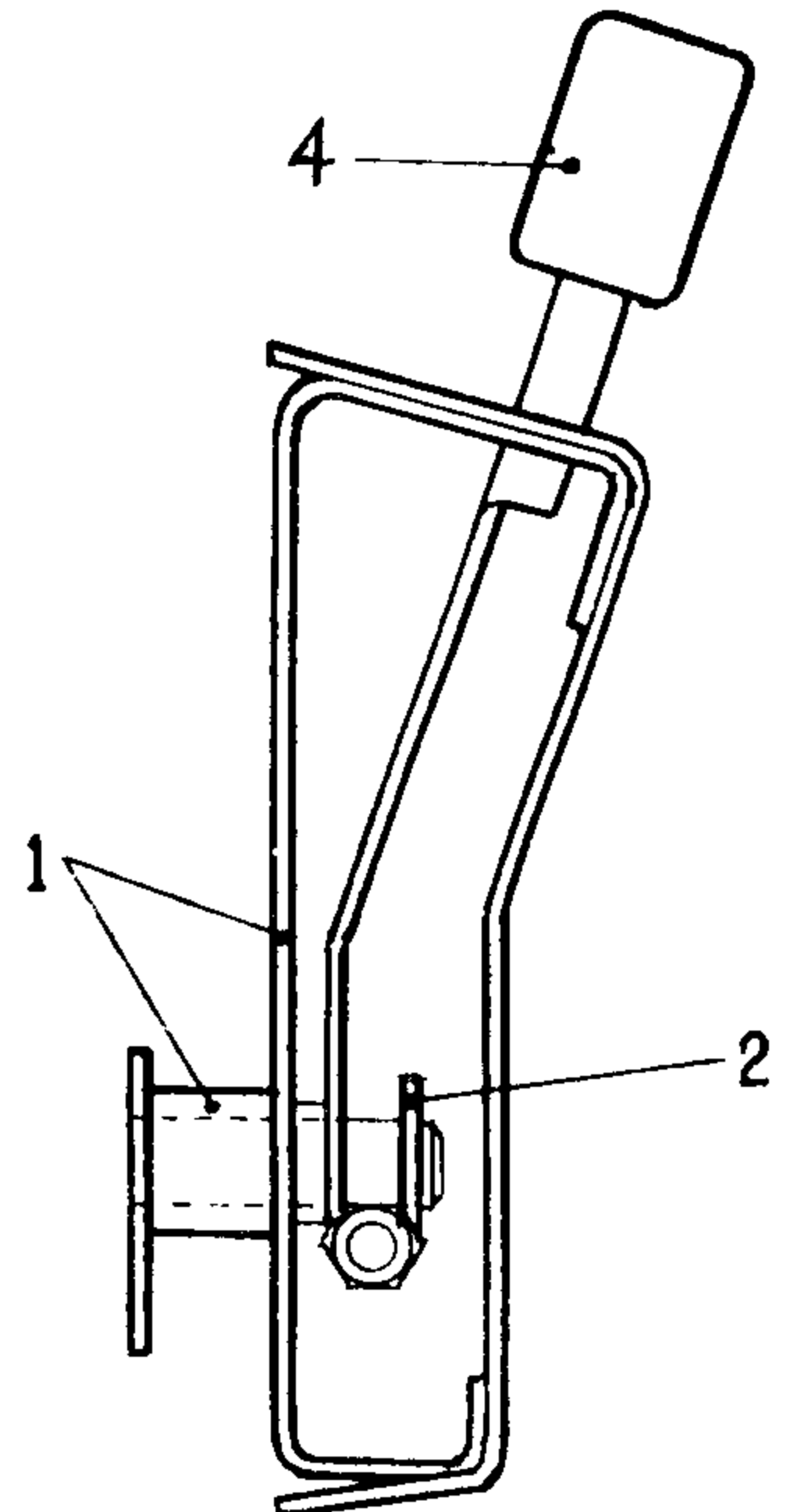
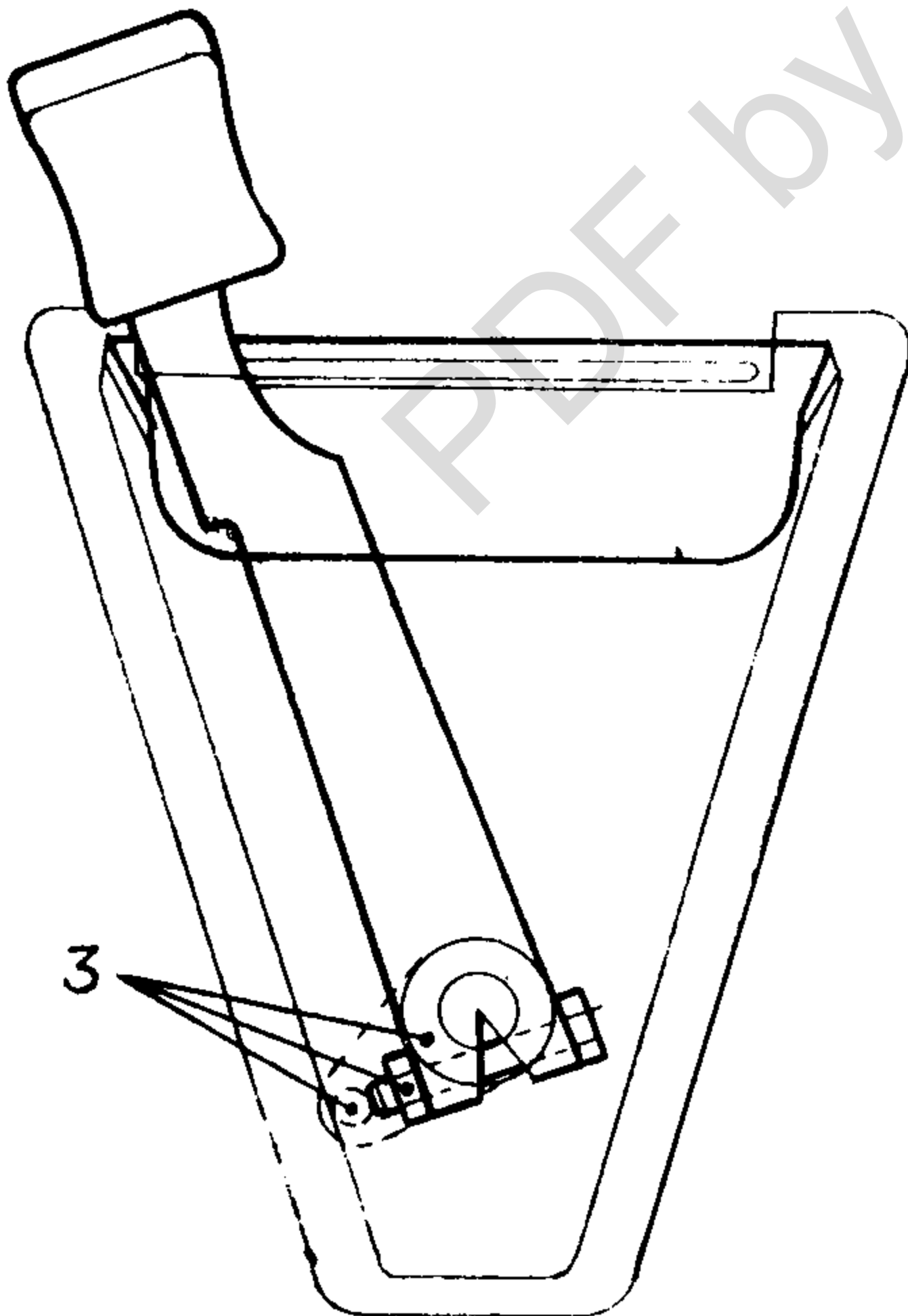


Fig. 1 Assembly of hand throttle control

5. From inside the driving compartment, remove the one large and three small plug grommets from the left hand half of the dash lower centre panel.

NOTE: If the dash lower centre panel is trimmed, locate the grommets and cut the trim to gain access.

6. Place a suitably sized distance piece onto a No. 10 UNF bolt.
7. Screw nutcert 78989, plain end first onto the bolt.
8. Locate the assembly with the waist of the nutcert through one of the small holes in the dash lower centre panel.
9. Fit a washer and nut to the end of the bolt protruding into the engine compartment.
10. Tighten the bolt and nut to compress the nutcert securing it to the dash.
11. Remove the nut, bolt, washer and distance piece, and fit the remaining two nutcerts in a similar manner.

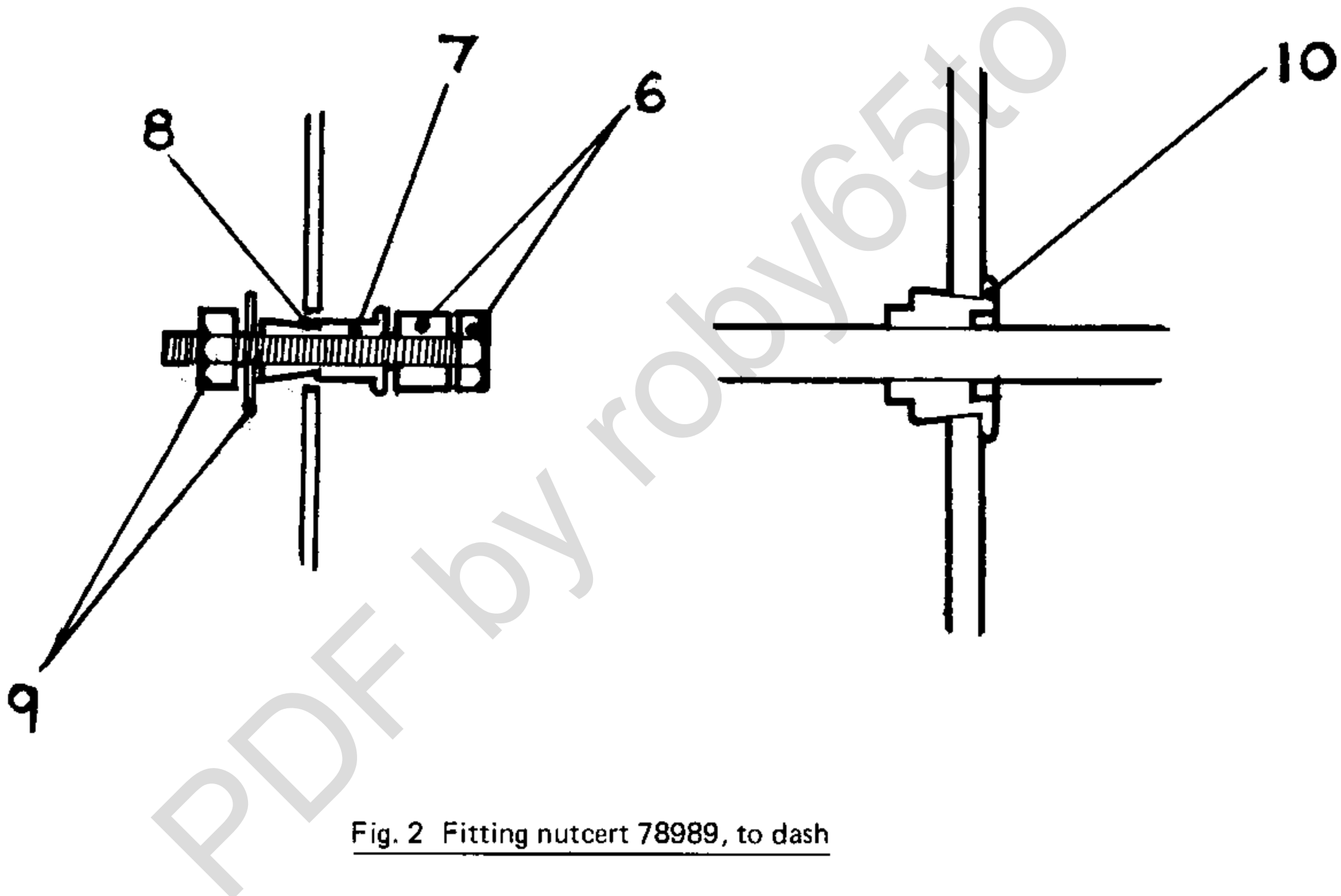


Fig. 2 Fitting nutcert 78989, to dash

12. Place sealing pad 577338 onto the back of the base plate. (Not required with trimmed dash.)
13. Locate the base plate assembly in position on the dash aligning the fixing holes, and secure using bolt 257019 (3), and spring washer 3073 (3).

Assembly of accelerator control linkage. RH Stg vehicles

14. Slacken the stop clip and carburettor lever fitted to the accelerator cross-shaft at the rear of the engine compartment.
15. Slide the cross-shaft clear of the left hand retaining bracket and withdraw the plain washer and carburettor lever.
16. Assemble stop clip 269132, spacing washer 3680, cross-shaft lever, long 577128 (side extension side last), spacing washer 3680 and cross-shaft lever, short 577127 (long extension first located above the side extension on the long cross-shaft lever).

continued

17. Refit the carburettor lever and plain washer, reassemble the cross-shaft to the left-hand retaining bracket and secure the carburettor lever and right hand stop clip in their original positions.
18. Fit control rod 577126, between the cross-shaft and hand control levers using clip 531394 (2).
19. Move the hand control lever to the closed (fully left) position.
20. Position the short cross-shaft lever so that it is just touching the side extension on the long cross-shaft lever and secure in place using bolt 256001, plain washer 3911 (2), and nut 254810.
21. Position the left hand stop clip to allow free rotary movement of the long cross-shaft lever with minimum end float, and secure using bolt 256001, plain washer 3911 (2) and nut 254810.

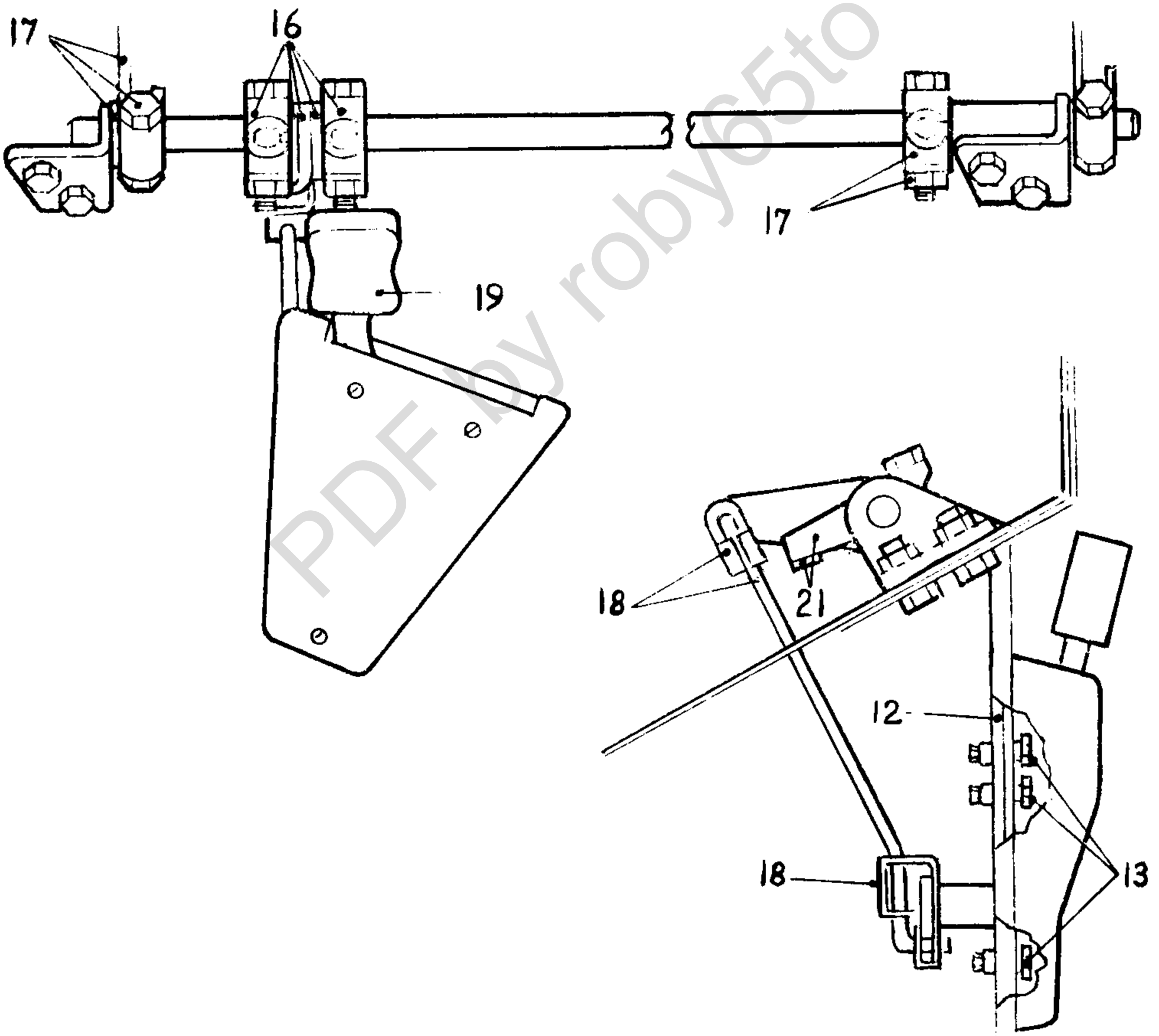


Fig. 3 Accelerator control linkage – RH Stg vehicles

Assembly of accelerator control linkage. LH Stg vehicles

22. At the engine side of the dash, disconnect the accelerator return spring, remove the accelerator lever, carburettor lever, relay shaft and retaining bracket. Discard the relay shaft and retaining bracket.
23. Fit bracket 236998 (2) in place of the original retaining bracket and at the opposite side of the dash where two, pre-drilled holes are provided. Secure the brackets using bolt 255206 (4), spring washer 3074 (4) and nut 254810 (4).
24. Assemble the following components to one end of accelerator relay shaft 577304. Stop clip 269132, spacing washer 3680, cross-shaft lever long 577128 (side extension side last), spacing washer 3680, cross-shaft lever short 577127 (long extension first located above the side extension on the long cross-shaft lever) and the original accelerator lever and washer.
25. Assemble stop clip 269132 and distance piece 592306 to the other end of the accelerator relay shaft.
26. Locate the accelerator relay shaft assembly through the retaining brackets as illustrated. It may be necessary to slacken the bracket fixings to fit the shaft.
27. Fit the original carburettor lever to the left hand end of the accelerator relay shaft.
28. Secure the accelerator and carburettor levers in their original positions.
29. Reconnect the accelerator return spring.
30. Fit control rod 577126, between the cross-shaft and hand control levers using clip 531394 (2).
31. Move the hand control lever to the closed (fully left) position.
32. Position the short cross-shaft lever so that it is just touching the side extension on the long cross-shaft lever and secure in place using bolt 256001, plain washer 3911 (2) and nut 254810.
33. Position the left hand stop clip to allow free rotary movement of the long cross-shaft lever with minimum end float, and secure using bolt 256001, plain washer 3911 (2) and nut 254810.
34. Position the right hand stop clip to allow free rotary movement of the distance piece with minimum end float, and secure using bolt 256001, plain washer 3911 (2) and nut 254810.

continued

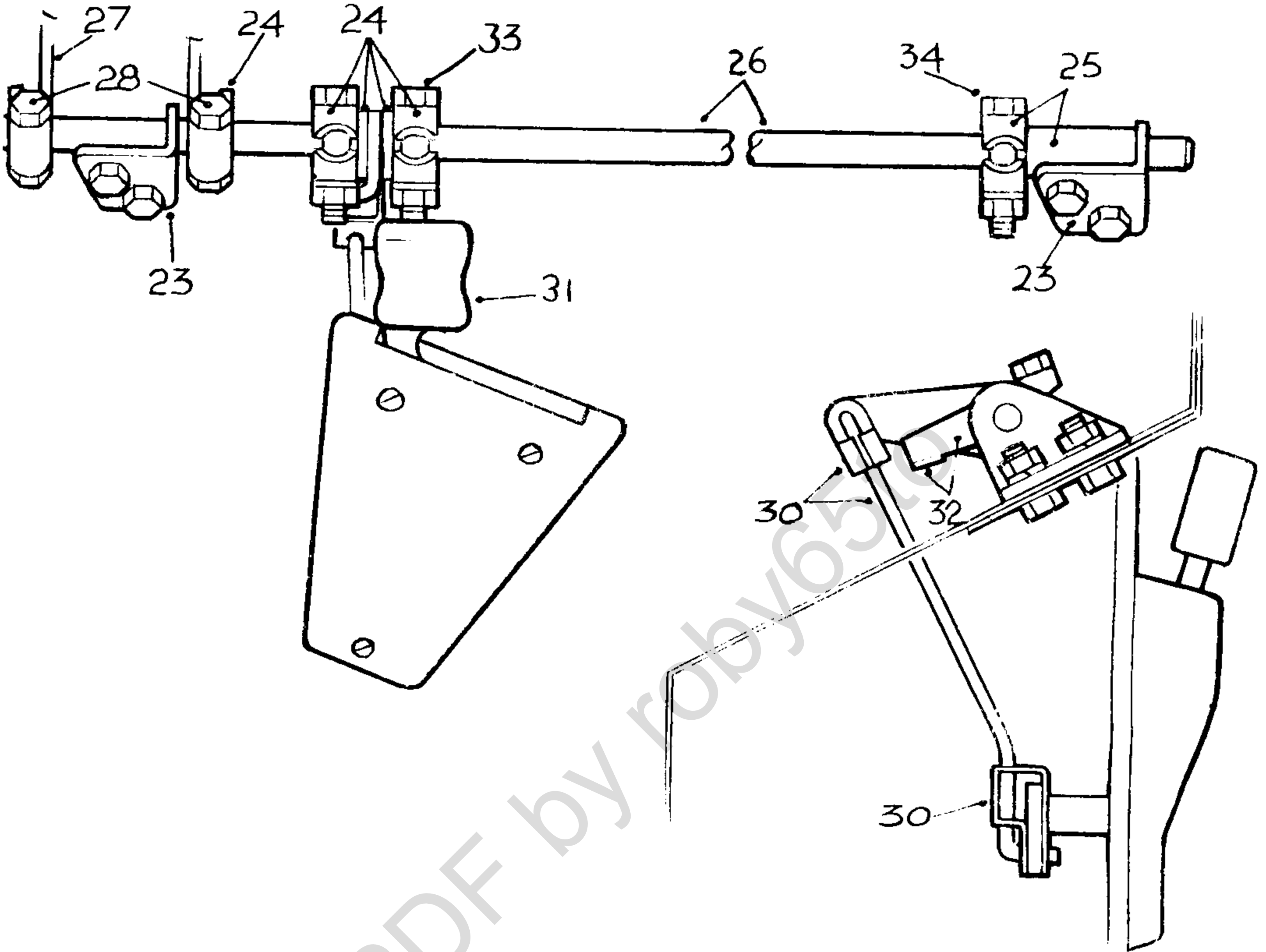


Fig. 4 Accelerator control linkage – LH Stg vehicles

RH Stg and LH Stg Vehicles.

35. Fit cover 346857, to the hand throttle control using drive screw 77704 (3) and locknut 79013 (2).
36. Start the engine and check for correct throttle control on the hand lever. Adjust as necessary by the two nuts on the control rod.
37. Check that the foot operated throttle overrides the hand throttle control linkage smoothly.

PDF by robby65to

PDF by robby65to