



Jaguar and Rover Triumph
Parts & Accessories
LEYLAND CARS
Fletchamstead Highway
Coventry CV4 9DB
England

FITTING INSTRUCTIONS AND PARTS LIST

Publication RTC 7024
Issue 2 November 1976

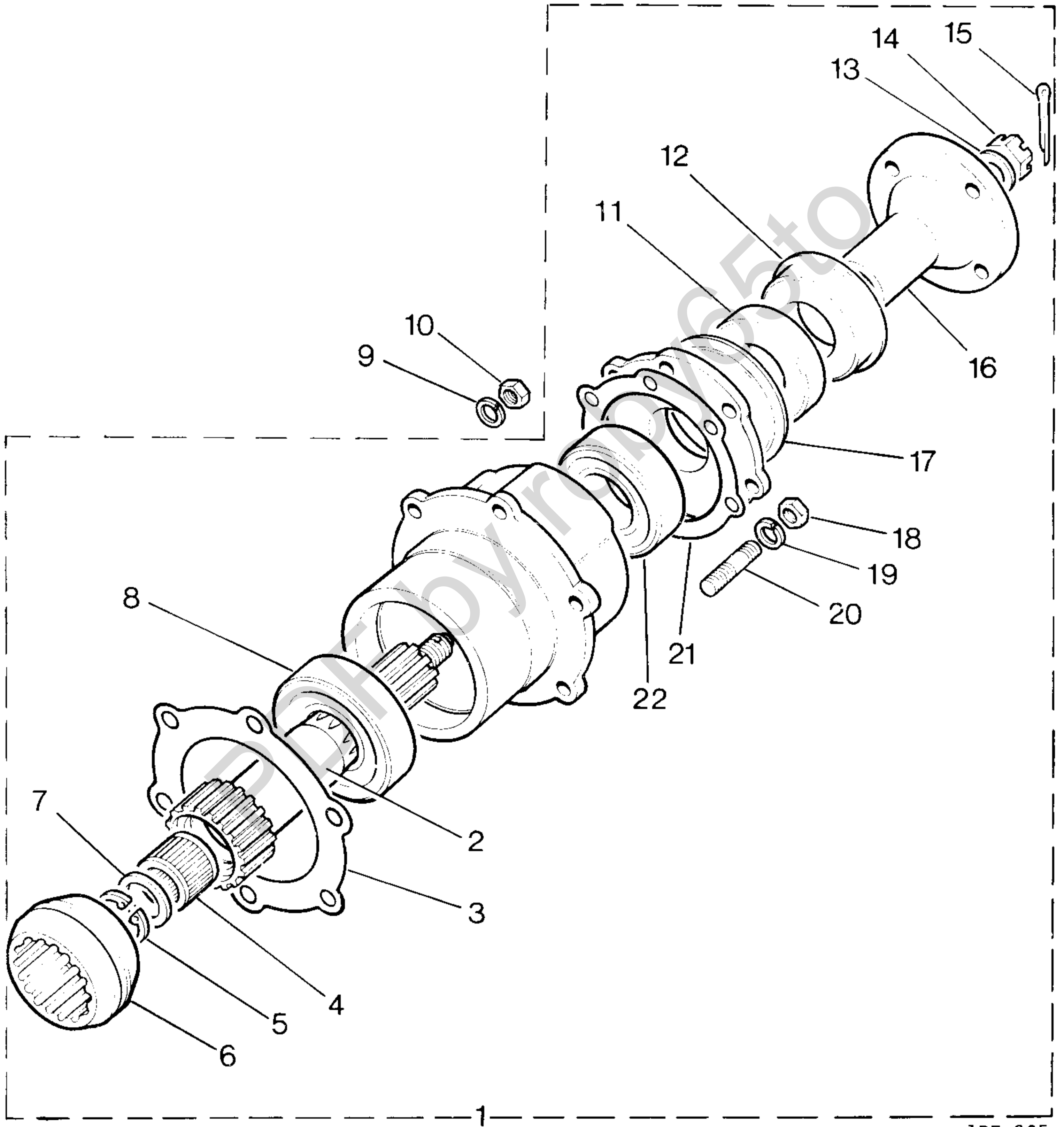
CENTRE POWER TAKE OFF AND SELECTOR ASSEMBLY

Kit Part No. RTC 8005

for the

LAND-ROVER

Series II, IIA and III



TRE 235

Fig.1

The Kit RTC8005 comprises all parts illustrated above and those on page 4

-3-
PARTS LIST

Plate Ref.	Description	Qty.	Part No.	Remarks
1	Gearbox P.T.O. drive assembly	1	230855	
2	Shaft for P.T.O. drive	1	219744	
3	Joint washer for housing	1	622047	
4	Bearing for gearbox mainshaft	1	217478	
5	Circlip fixing retaining plate	1	217525	
6	Dog clutch for P.T.O. shaft	1	217522	
7	Retaining plate for bearing	1	217523	
8	Front bearing	1	55714	
9	Spring washer	6	GHF333)Fixing P.T.O.
10	Nut ($\frac{3}{8}$ " BSF)	6	2827)to gearbox
11	Oil seal	1	FRC1780	
12	Mud shield for flange	1	236074	
13	Plain washer	1	3300)Fixing
14	Slotted nut	1	3259)flange
15	Split pin	1	2428)to shaft
16	Flange for drive shaft	1	539993	
17	Mud shield for oil seal	1	236548	
18	Nut (5/16" BSF)	6	2828)Fixing oil
19	Spring washer	6	GHF332)seal housing
20	Stud for oil seal housing	6	216986)to P.T.O.
21	Shim for bearing 0.003"	A/R	41050	
	Shim for bearing 0.005"	A/R	41131	
22	Rear bearing	1	217325	

Note: Parts not carrying a plate reference are NSS (Not Supplied Separately)

Encloses parts which form an assembly or kit

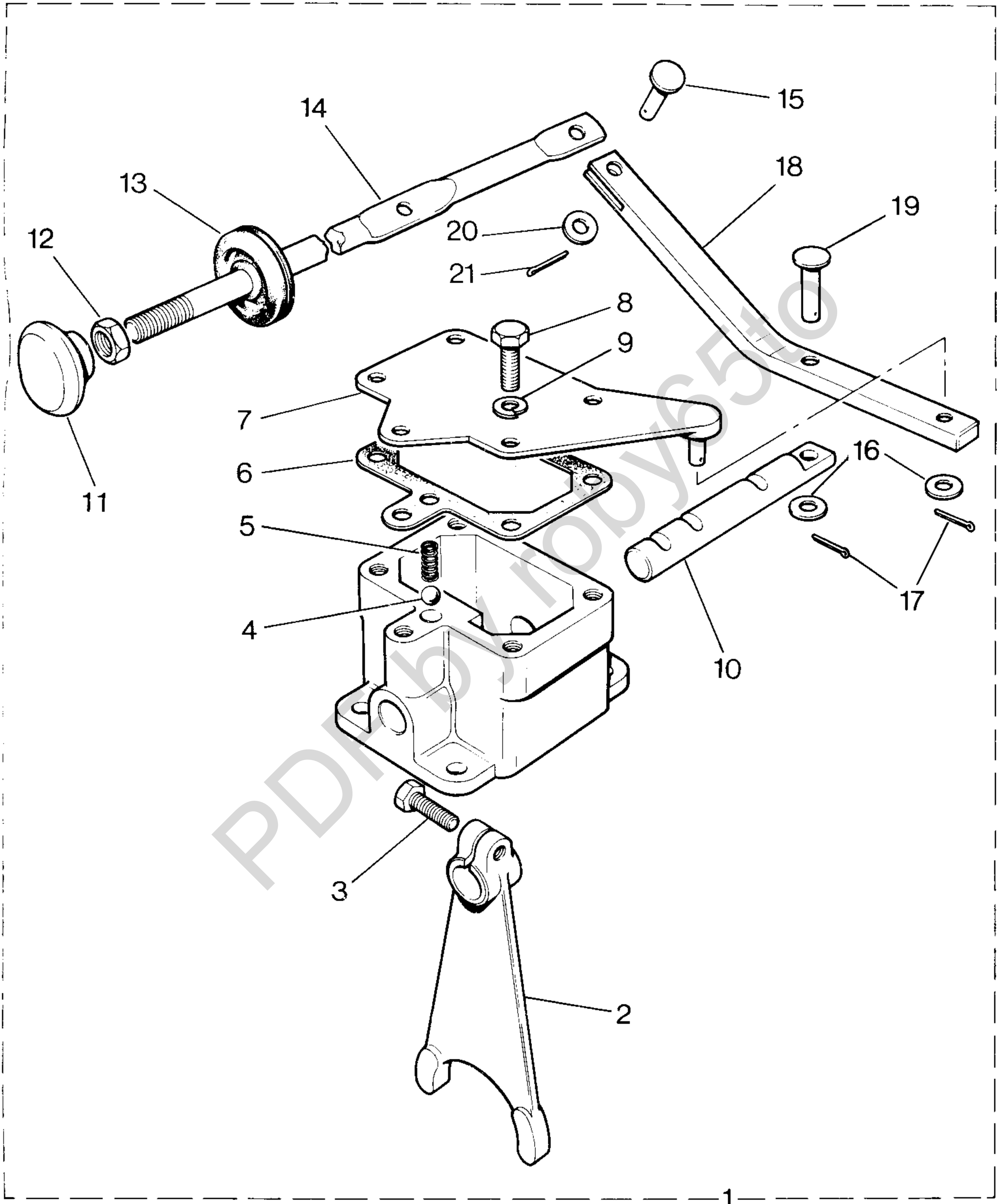


Fig.2

6RE 44

The Kit RTC8005 comprises all parts illustrated above and those on page 2

PARTS LIST

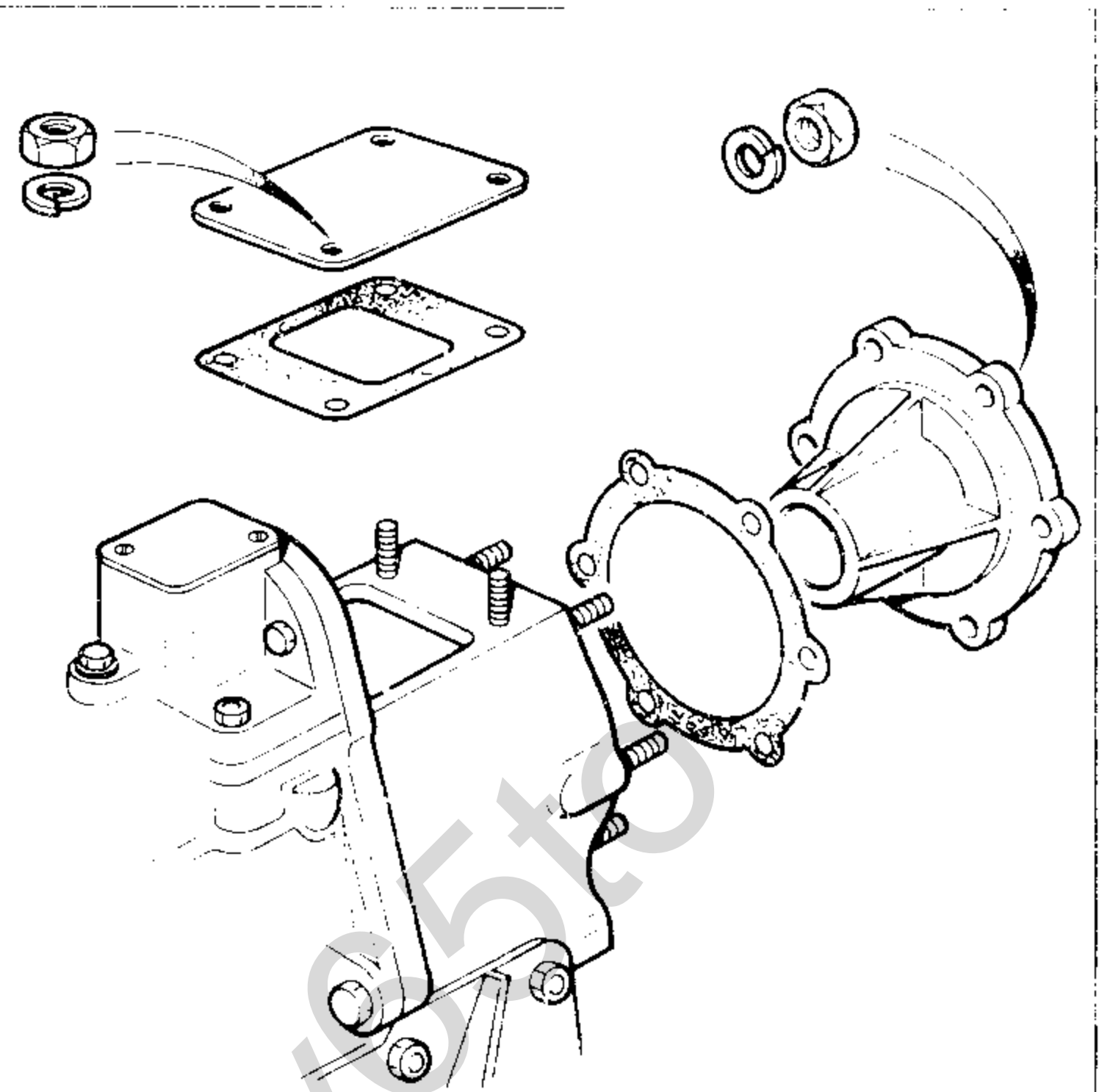
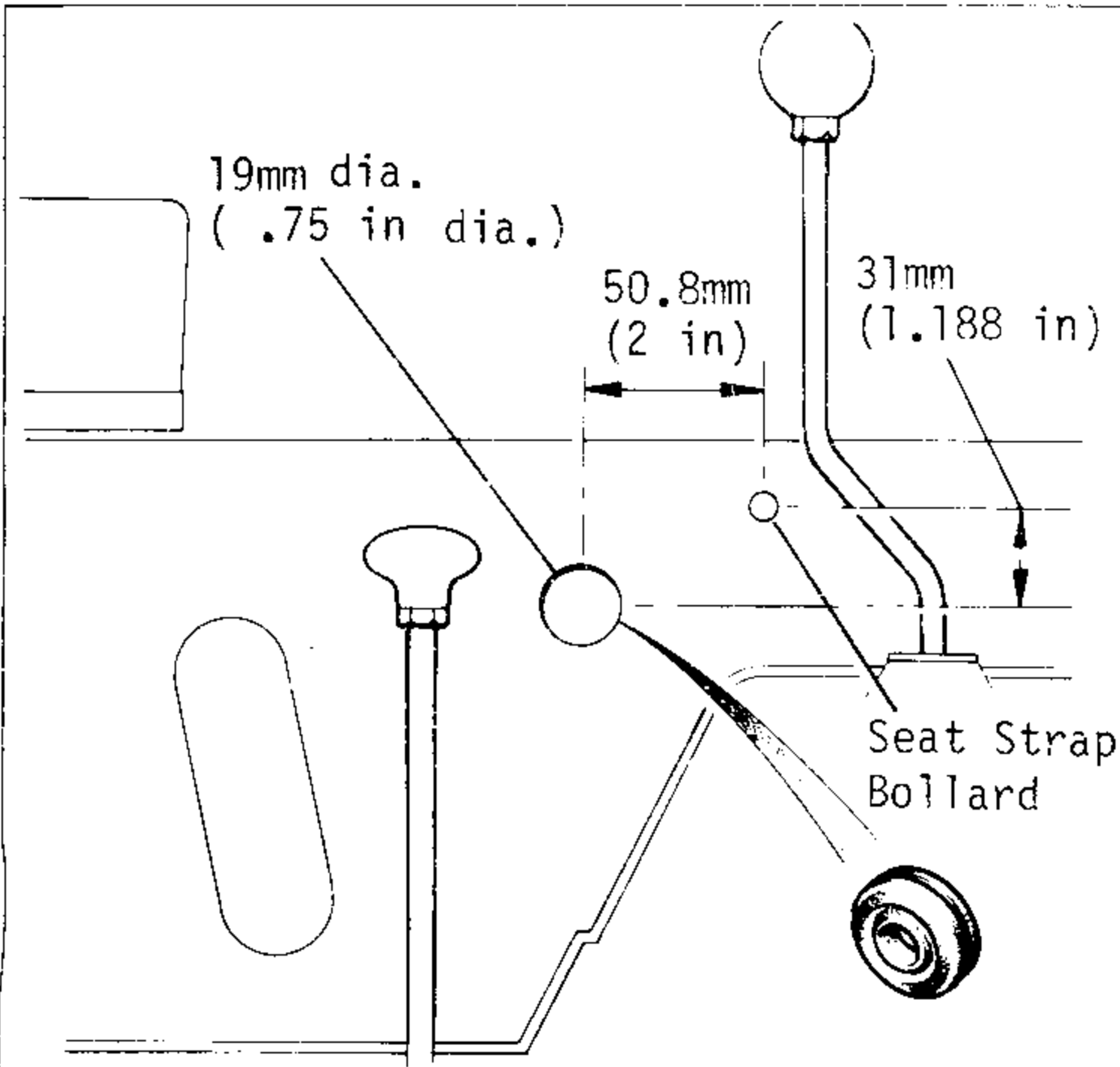
Plate Ref.	Description	Qty.	Part No.	Remarks
1	Selector unit assembly	1	RTC 7014	
2	Selector fork	1	90217584	
3	Pinch bolt (Fork to shaft)	1	237160	
4	Ball	1	1643	
5	Spring	1	NRC 255	
6	Gasket (Top plate to housing)	1	559600	
7	Top plate	1	RTC 7019	
8	Bolt ($\frac{1}{4}$ " UNC x $\frac{5}{8}$ ")	5	253206	Fixing top plate
9	Spring washer)	5	GHF331	to housing
10	Selector shaft	1	RTC 7018	
11	Knob	1	218050	
12	Locknut for knob	1	3764	
13	Grommet	1	508571	
14	Control lever	1	RTC 7020	
15	Pin (change to control lever 11/16" long)	1	RTC 7023	1/4" dia.
16	Plain washer 5/16"	2	3830	
17	Split pin 3/32	2	2392	
18	Change lever	1	RTC 7021	
19	Pin (change lever to selector shaft 1 1/16" long)	1	RTC 7022	5/16" dia
20	Plain washer 1/4"	1	3831	
21	Split pin 1/16"	1	3958	

Note: Parts not carrying a plate reference are NSS(Not supplied seperately)



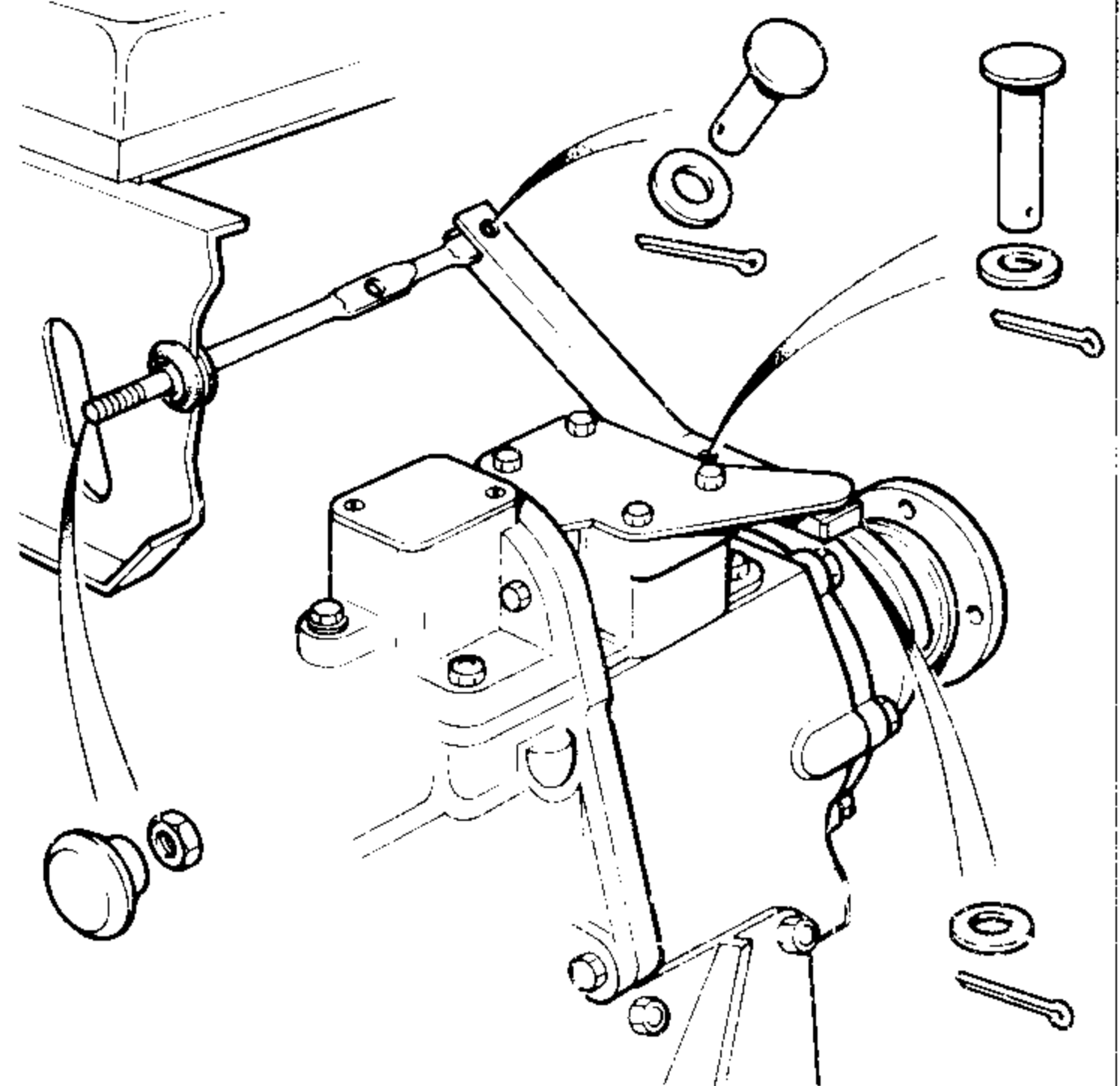
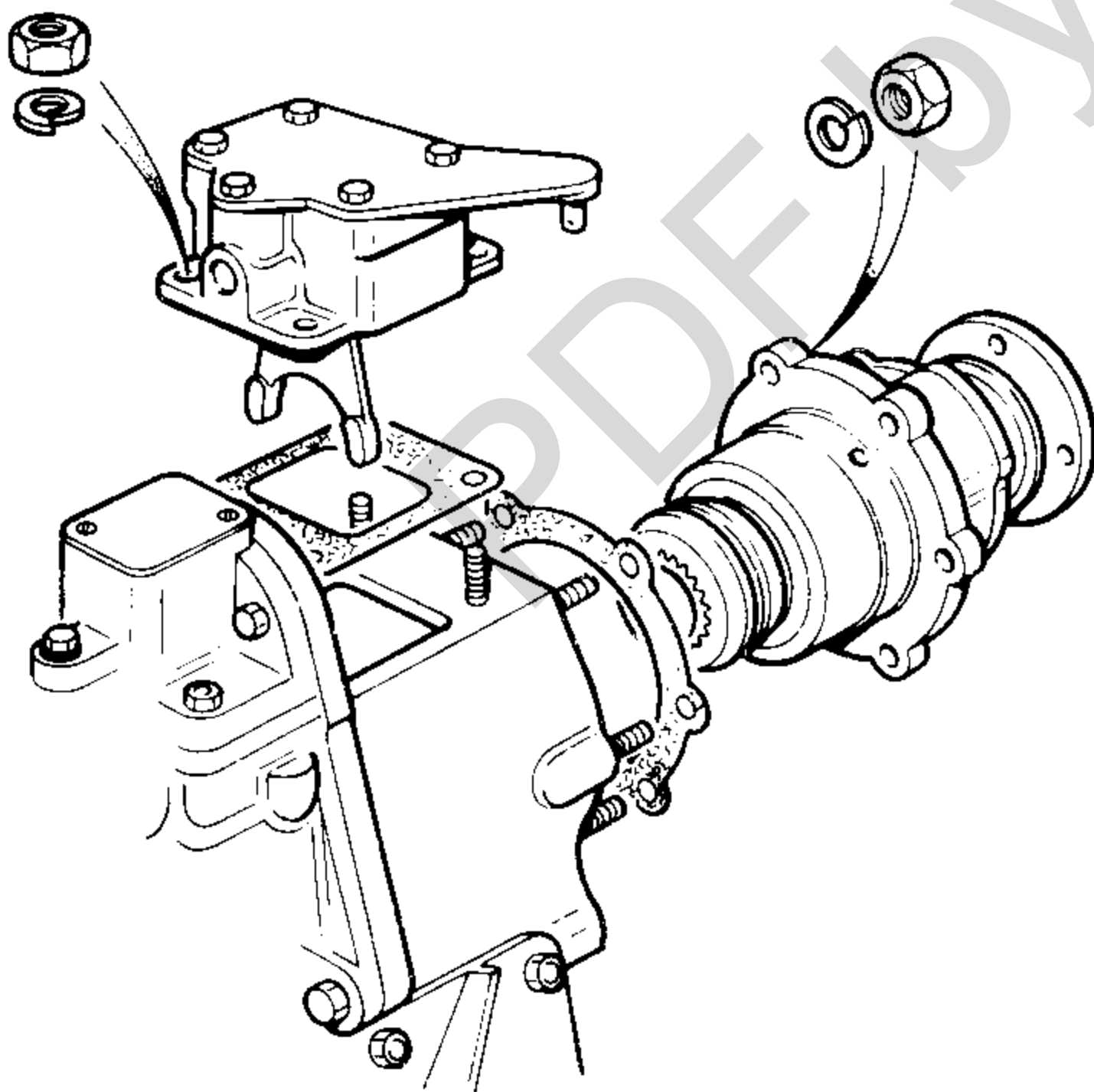
Encloses parts which form an assembly or kit

FITTING INSTRUCTIONS



1. Remove centre seat panel. Mark off and drill one hole. Fit grommet to hole.

2. Remove rear bearing housing and top cover plate from transfer box casing.



3. Secure PT0 to transfer box using existing fixings and positioning oil drilling to top LH side. Engage fork with dog and secure selector unit to transfer box using existing fixings.

4. Assemble linkage using front hole for four cylinder vehicles or rear hole for six cylinder vehicles. Fit knob and locknut.

OPERATING INSTRUCTIONS

To engage power take-off depress clutch and move knob forwards.
To disengage depress clutch and move knob backwards.

Any forward or reverse gear may be used to drive the power take-off.

For continuous operation 4th gear must be used to prevent overheating of the gearbox.

For stationary applications the transfer gear lever (red knob) must be placed in the neutral position.

Power take-off speeds will vary with the gear selected. See chart for details.

Horsepower available. See chart for details.

MAINTENANCE

No maintenance is necessary except for occasional lubrication of the linkage.

P.T.O. HORSEPOWER CHART STATIONARY USE

ENGINE R.P.M.	°C AMBIENT	2¼ PETROL 8:1 COMP STANDARD	2¼ PETROL 8:1 COMP OIL COOLER + 8-BLADED FAN	2¼ DIESEL STANDARD	2¼ DIESEL OIL COOLER + 8-BLADED FAN	2.6 PETROL WITH OIL COOLER
1500	MAX	31	31	29	29	37
	25	24	27	24	22	35
	30	19	25	21	20	35
	35	16	22	18	18	34
	40	12	13	16	16	27
	45	8	13	12	13	18
	50	0	8	6	11	13
2000	MAX	41	41	35	35	49
	25	28	35	24	27	43
	30	25	31	19	25	42
	35	19	27	14	22	41
	40	13	22	8	19	29
	45	8	19	2	14	22
	50	0	14	0	11	16
2500	MAX	50	50	42	42	63
	25	29	43	25	31	51
	30	25	37	18	28	50
	35	20	32	11	24	47
	40	13	26	2	19	32
	45	8	21	0	13	25
	50	0	14	0	7	18
3000	MAX	57	57	48	48	71
	25	32	44	0	32	60
	30	24	40	0	29	59
	35	16	32	0	24	50
	40	8	27	0	19	37
	45	5	22	0	10	28
	50	0	12	0	0	19

All figures quoted are continuous horsepower ratings based on maximum temperature limits of 100°C for coolant and 105°C for oil.

The maximum figures quoted show the maximum horsepower available for intermittent use subject to the engine temperature limits being observed.

P.T.O. SPEEDS AND M.P.H. RELATIONSHIP FOR SERIES III LAND ROVER

NB: The speeds given in the chart relative to the rear P.T.O. are with gear ratios as supplied by Rover. Gears may be transposed to change the ratios.

The ratios are: Series III Standard .720:1 (18/25)
 Transposed 1.378:1 (25/18)

CONDITION	MODEL	SERIES III						
		ALL	1ST	2ND	3RD	4TH	REV	
1000 R.P.M. ENGINE SPEED	MAIN GEAR	ALL	1ST	2ND	3RD	4TH	REV	
	GEAR RATIO	ALL	3.68	2.22	1.50	1.00	4.02	
	CENTRE PTO RPM	ALL	272	450	666	1000	249	
	REAR PTO RPM	ALL	377	630	934	1389	345	
	M.P.H. HIGH	88	4.10	6.75	10.00	15.0	3.75	
	RANGE	109	4.48	7.3	11.0	16.50	4.10	
		109 1 TON	3.61	6.0	8.90	13.3	3.30	
	MPH LOW	88	1.98	3.30	4.90	7.30	1.80	
	RANGE	109	2.18	3.60	5.30	8.00	2.00	
		109 1 TON	1.70	2.80	4.37	6.25	1.56	
	540 RPM REAR PTO OUTPUT SPEED	RPM ENGINE	ALL	1430	864	584	389	1565
		M.P.H.	88	5.84	5.84	5.84	5.84	5.84
HIGH		109	6.42	6.42	6.42	6.42	6.42	
RANGE		109 1 TON	5.17	5.17	5.17	5.17	5.17	
LOW		88	2.80	2.80	2.80	2.80	2.80	
RANGE		109	3.11	3.11	3.11	3.11	3.11	
		109 1 TON	2.43	2.43	2.43	2.43	2.43	

PDF by robv65to