



The Rover Company Limited  
 Technical Service Department  
 Solihull, Warwickshire  
 England

# FITTING INSTRUCTIONS

Part No. 320832  
 Issue 1 April 1972

## NOTE

The Manufacturers reserve the right to vary their specifications with or without notice, and at such times and in such manner as they think fit. Major as well as minor changes may be involved in accordance with the Manufacturer's policy of constant product improvement.

Whilst every effort is made to ensure the accuracy of the particulars contained in this Fitting Instruction, neither the Manufacturer nor the Distributor or Dealer by whom this Fitting Instruction is supplied, shall in any circumstances be held liable for any inaccuracy or the consequences thereof.

**SUBJECT:** FITTING ASHTRAY

**MODELS:** Series III Land-Rover 88" and 109"

### BRIEF

**DESCRIPTION:** The ashtray fits in the centre of the facia on the sloping face below the parcel tray, so that the lid of the ashtray is flush with the front face of the parcel tray.

### PARTS

<b>REQUIRED:</b>	Ashtray, complete assembly		1	320831
	comprises:			
	<i>Description</i>		<i>Qty</i>	<i>Part No.</i>
	Ashtray		1	347548
	Bracket for ashtray		1	347953
	Rawlnut, fixing bracket to heater duct		4	395055
	Screw (M4 x 1/2" long)	} Fixing ashtray to bracket	2	888363
	Plain washer		2	851317
	Spring washer		2	810007
	Nut (M4)		2	854047

- PROCEDURE:**
1. Using bracket 347943 as a template, locate it in position on the sloping front face of the parcel tray, as illustrated, then mark out and drill four holes 7,2 mm (0.281 in) diameter through the parcel tray.
  2. Secure bracket 347943 to the parcel tray, using Rawlnut 395055 (4).
  3. Locate ashtray 347548 through the aperture in bracket 347943 and secure using screw 888363 (2), plain washer 851317 (2), spring washer 810007 (2) and nut 854047 (2).

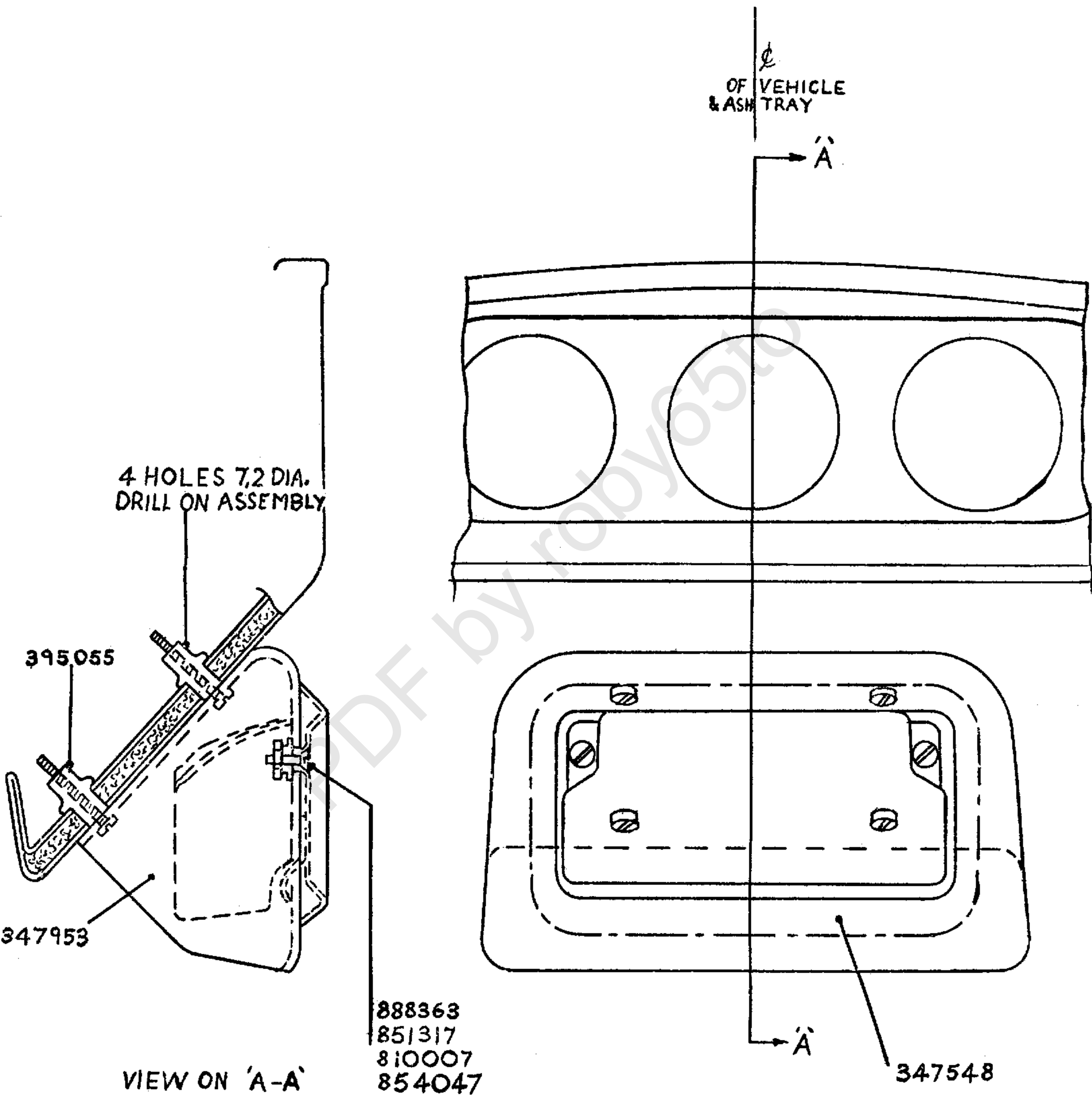


Fig. 1. Ashtray fitted to the sloping front face of the parcel tray